

# Finding care options is now easier

Our Find Care tool helps you find doctors and compare costs

Choosing a provider who is right for you makes a difference — and choosing a provider in your plan can help keep your costs under control. You can easily find high-quality, cost-effective care using our Find Care tool on the Sydney Health mobile app.

## How you can use Find Care

The Find Care tool brings together details about doctors, hospitals, labs and other health care facilities in your plan. You can easily compare what's important to you, like cost, location and office hours. Find Care helps you:



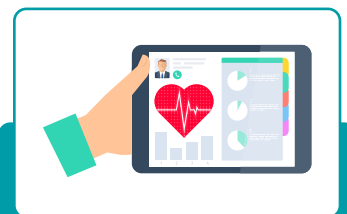
Search for providers and facilities in your plan by name, specialty or procedure.



Compare costs for health care services based on your plan.



Find providers near you and explore virtual care options.



Review details about doctors, such as their specialties, gender, languages spoken and contact information.

## Choose with confidence

You can start using **Find Care** by downloading the Sydney Health app to your mobile device. Select **Find Care** and the tool will guide you through the steps.

## We're ready to help you

If you have questions, you can reach us using the interactive chat feature on the Sydney Health app.